

► Our technology. Your success.

Pumps • Valves • Service



KSB Fire-fighting pump Safe & reliable fire protection system



Fire protection – KSB’s safe and reliable fire-fighting systems with global success

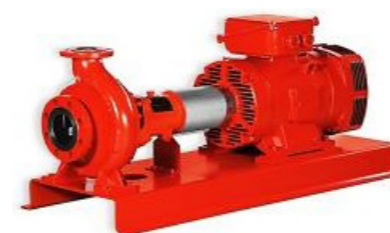
Drawing on experience and specialist knowledge in fire protection, we are fully familiar with the standards, regulations and certifications in this field. KSB provides pumps and system solutions meeting a vast number of national standards and certifications.

At KSB Indonesia, we not only provide our customers with pumps and valves but also all other equipment forming part of a fixed system for fire-fighting. We offer the necessary sprinkler pumps, pressure booster systems and all-in solutions from a single source. This shows once more that KSB can provide both custom-engineered solutions and standard systems.



KSB Fire pump product portfolio

Pump type	Certification	Capacity (usgpm)	Head (psi)	Speed (rpm)
a. End Suction				
Etanorm FXM (KSB Germany)	UL & FM	500 - 1500	81 - 200	2950
Meganorm (KSB Brazil)	FM	500 - 2000	110 - 193	1780
ES (Armstrong-Canada)	UL	250 - 1750	41 - 222	1780 - 3000
ES (Armstrong-Canada)	UL & FM	250 - 1750	41 - 222	1780 - 3000
ESF (NM Fire-China)	UL & FM	50 - 750	69 - 157	2980 - 3550
Pump type	Certification	Capacity (usgpm)	Head (psi)	Speed (rpm)
b. Horizontal Split Case				
Omega AF (KSB Australia)	FM	500 - 3000	34 - 223	1450 - 3000
Omega FXF (KSB Germany)	FM	2000 - 3500	77 - 226	1480 - 1780
Omega, RDL (KSB Brazil)	FM	750 - 2500	82 - 215	1450 - 1760
RDL (KSB Argentina)	UL	500 - 3250	45 - 210	1450 - 2900
RDL (KSB Argentina)	UL & FM	500 - 3250	45 - 210	1450 - 2900
HSC (Armstrong-Canada)	UL	500 - 3000	40 - 293	1480 - 3560
HSC (Armstrong-Canada)	UL & FM	500 - 3000	40 - 293	1480 - 3560
SCF (NM Fire-China)	UL	300 - 8000	79 - 485	1480 - 3550
Pump type	Certification	Capacity (usgpm)	Head (psi)	Speed (rpm)
c. Vertical Turbine				
B-Pump (KSB Brazil)	FM	1000 - 4000	133 - 221	1780
VTP (NM Fire-China)	UL	100 - 6000	40 - 361	1480 - 2900



Etanorm / MCPK (non-listed)

Technical data

- flow rate: up to 3.250 USGPM
- head: up to 160 m
- temperature: up to 140 °C

Construction

- horizontal, end suction, centrifugal, radially split volute casing pumps in back-pull-out design fitted with single stage radial impeller.



Etanorm FXM (UL/FM)

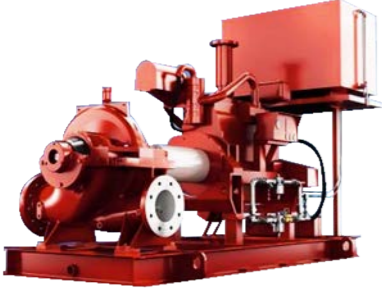
Technical data

- flow rate: up to 500 - 1.500 USGPM
- head: up to 160 m
- temperature: up to 140 °C

Construction

- handling clean fluids which are neither chemically nor mechanically aggressive to the pump materials.
- sprinkler systems to FM 3-7, NFPA 20





Omega / RDLO

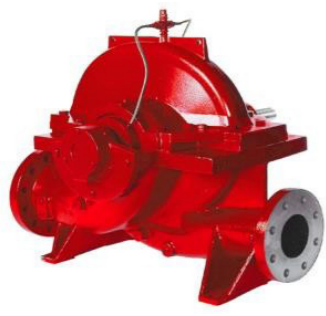
Technical data

- flow rate: up to 44.000 USGPM
- head: up to 240 m
- temperature: up to 80 °C

Construction

- horizontal split case pump with radial flow impeller

FM APPROVED



Split Case

Technical data

- flow rate: up to 4,900 USGPM
- head: up to 163 m
- certe: FM, UL

Construction

- horizontal split case pump with radial flow impeller


Main applications

- Sprinkler systems to FM Approval Standard

Fluids handled

- Fire-fighting water
- No aggressive, abrasive or solid substances

FM APPROVED




Movitec

Technical data

- flow rate: up to 490 USGPM
- head: up to 249 m
- temperature: up to 120 °C
- discharge press: up to 40 bar
- speed: up to 3.600 rpm

Construction

- multi-stage, vertical inline high-pressure centrifugal pumps in ring-section design.




Multitec (non-listed)

Technical data

- flow rate: up to 6.600 USGPM
- head: up to 1.000 m
- temperature: up to 200 °C

Construction

- horizontal Multistage pump High pressure pump in ring section design



Vertical Turbine

Technical data


- flow rate: up to 11.400 USGPM
- head: up to 250 m
- Cert: FM, UL

Construction

- B Pump Vertical Turbine Pump

Feature: Technology


FM APPROVED



Amstrong (listed UL)

Technical data

- ES (end suction): 250 – 1750 head: up to 150 m
- HSC (split case) 500 – 3000 usgpm, h up to 200 m

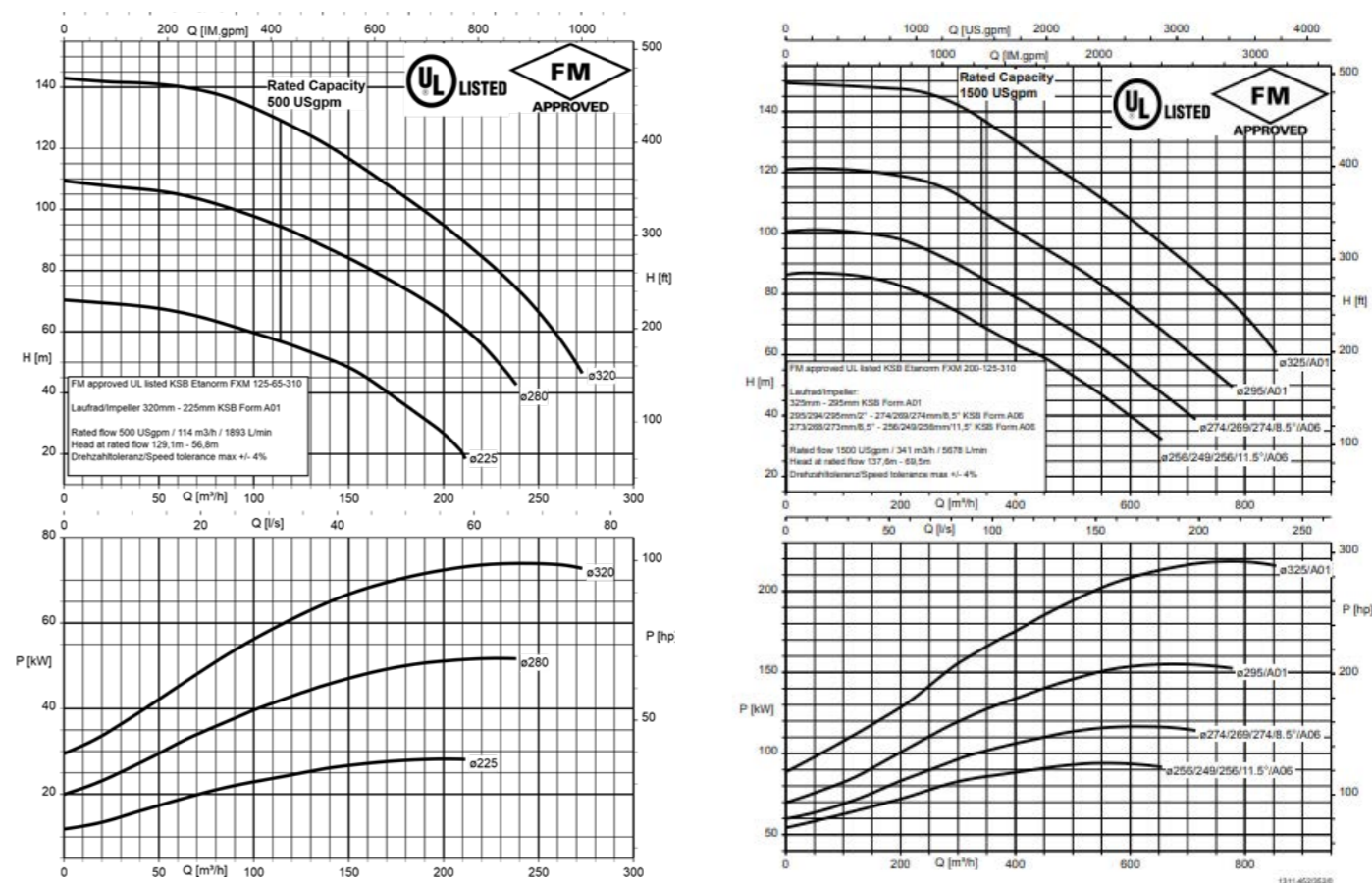


NM Fire (listed UL)

Technical data

- SCF (split) 300 -8000, h up to 330 m
- ESF (end suction) 50 – 750, up to 110 m
- VTP (vertical Pump), 100 -6000, up to 250

Performance curve



Plant Type	Products and Specification	Years
	Diesel Fire Pump - ES 4 x 3 x 13 NF with Clarke JU4H-UF22 - 56 kW@2600 rpm	2020
Data Center	Diesel Fire Pump - ES 4x3x13 FM with Clarke JU4H-UF04 37 kW@2350 rpm	2020
	Diesel Fire Pump - ES 6x5x13 FM with Clarke Engine JU6H-UF34 - 119kW@2600 rpm	2020
	Diesel Fire Pump with ETN-100-080-250 GB and Engine Clarke JU4H-NL3	2020
Office Building	Electric Fire Pump with ETN 100-080-250GB and ABB Motor China, Safe Area, 75kW, 2P, IP55, 400V, 50Hz	2020
	Jockey Fire Pumpset Movitec VCF 010/11B with KSB Motor 4 kW/3 P/400 V/50 Hz	2020
	Fire Water OMEGA 100-200 A GB PF With Diesel Engine JU4H-NL34 94kW/2960 rpm/12VDC	2017
Oil Terminal	Diesel Fire Pump; Clarke Type JU6H-NLKAQ8 186 KW @1760 RPM; Omega150-460 B SC1; Tornatech GPD 12/220	2020
	Jockey Fire Pump; Movitec VSF 006/16-B; Tornatech Control Panel JP3 4 kW/400V/50Hz/IP55	2020
	Diesel Fire Water Pump - Omega FXF 200-520 with Engine Clarke DQ6H-UFKA88	2019
Hotel Building	Fire Water Pump Electric Motor HSC 6x5x15NF w/ ABB Motor 200kW/400V/2P/IP55/50Hz	2020
	Fire Water Pump set HSC 6 x 5 x 12F w/ Electric Motor 90kW/400V/3Ph/2p/50Hz/IP55/UL-FM	2019
	Fire Water HSC 6 x 5 x 12F With Diesel Engine JU4H-UF54 145Hp/3000 rpm/12VDC/UL-UFM	2019
Coal Fire Power Plant	Diesel Fire Pump - HSC 6x5x15F with Clarke Engine JU6H-UF52/157kW/2600 rpm UL Listed/FM Approved	2019
	Electric Fire Pump - HSC 8x6x12.5 MF with Motor 132kW/400V/50Hz/3Ph/2P/IP55/c.w Space Heater	2019
	Electric Fire Pump Omega 125-290 B with TECO Motor 132 kW/380V/50Hz/2P/IP55/B3	2019
	Fire Water Pump set OMEGA 150-605 A SB w/ Electric Motor 250kW/6000V/3Ph/4p/50Hz	2016
	Fire Water ETN 125-100-200 GB With Diesel Engine JU4H-NL14 58kW/2960 rpm/12VDC	2016
	Jockey Fire Pump VABX 60C/22 with electric motor 7.5 kW/480V/3Ph/60Hz/IP55	2016
Port Building	Diesel Fire Pump - B-Pump B08D/4VN with Diesel Engine Cummins 55 kW - Non UL/FM Approved	2019
	Electric Fire Pump - B-Pump B08D/4VN with TECO Motor 55kW - Non UL/FM Approved	2019
Industrial Water Treatment	Diesel Fire Pump ; Omega 080-270 AF GB with Diesel Engine Clarke JU4H-UF34/86kW@3000rpm	2019
	Electric Fire Pump; Omega 080-270 AF GB, with ABB Motor 75 Kw/380V/50Hz/2P/IP55	2019
Gold Mine	Fire Pump Package DFP, EFP & JFP on One Baseframe; ETN 100-080-250 GB; VCF 010/15-B	2019
	Fire Water Pump Omega 125-290 A F FM Approved Without Diesel Engine with GPD 24 VDC	2016
Gas field	Diesel Fire Pump - HSC 6x5x15 F with Clarke Engine JU6H-UF62/ 179kW/ 2600 RPM/ UL/ FM	2019
Commercial Building	Fire Water Multitec C 150/5-12.2 With Diesel Engine DQ6H-NLKA98 336kW/1760 rpm/24VDC	2018
	Diesel Fire Main Pump Package (HSC 6 x 5 x 12)	2018
Renewable / Geothermal Power Plant	Fire Pump Package Including Material Certificates, Testing, Commissioning, Packing and MDR	2018
Factory (Industrial)	Fire Water Diesel Driven Pump - Omega FXF 200-520 w/ Clarke DQ6H-UFKA88, 280 kW@1780 rpm	2018
	Fire Water OMEGA 200-520 AF With Diesel Engine DQ6H-UFKA98 306kW/1760 rpm/24VDC	2018
Gas Engine Power Plant	Fire Water HSC 6 x 5 x 12F With Diesel Engine JU4H-UF54 108kW/3000 rpm/12VDC	2018
LNG plant	Fire Water OMEGA 150-460 A GB PF With Diesel Engine DP6H-NLKA50 218kW/1760 rpm/24VDC	2017

FM Approved for KSB Indonesia



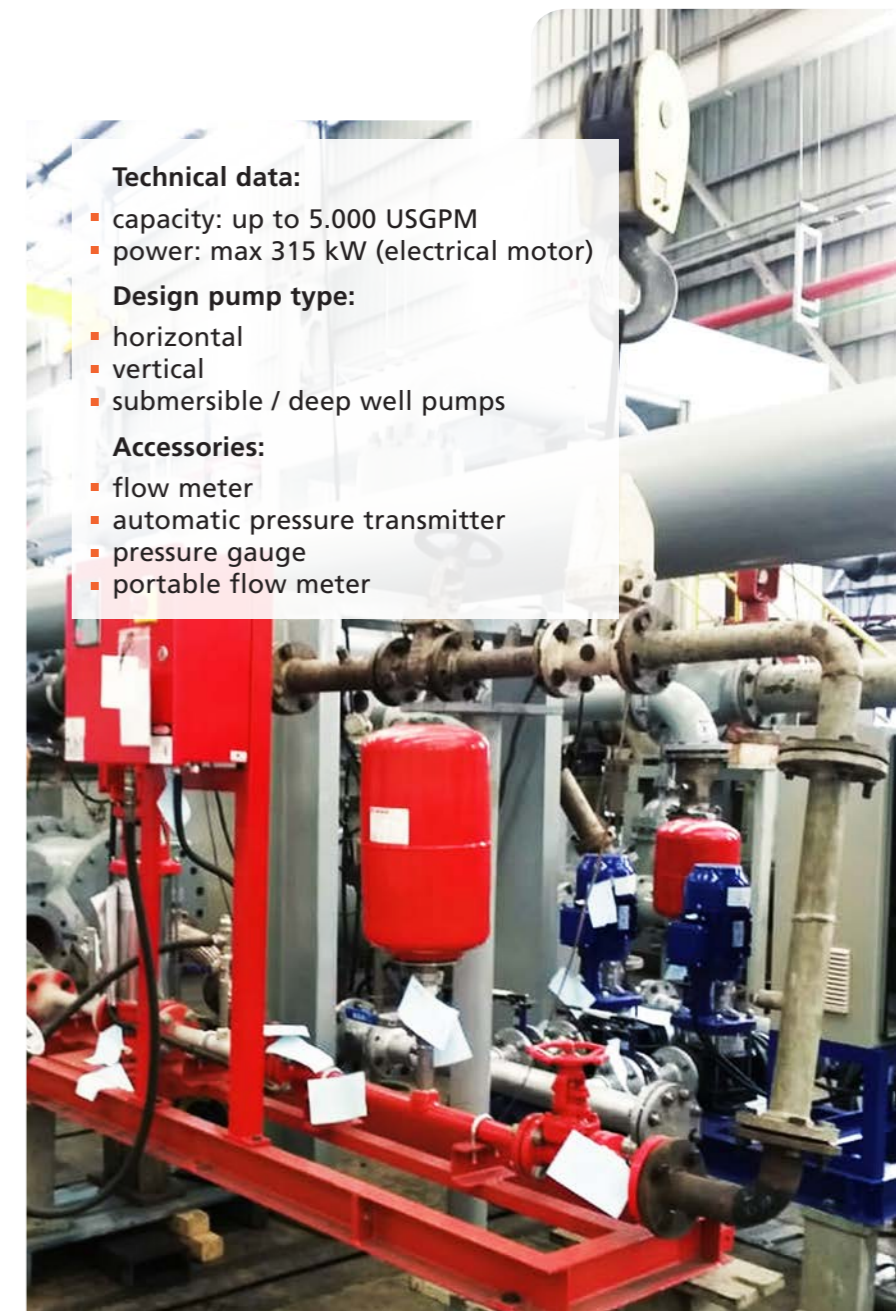
When it comes to fire protection system, fire pumps are the most critical components and safety is an important requirement. KSB Indonesia had obtained the FM Approved, an official certificate to package fire pump products Etanorm FXM and Omega FXF. FM Approved of the certified products conform to the highest standards for safety and property loss prevention standard for use in commercial and industrial facilities.

Pump testing facility

KSB Indonesia has proven the experiences in the assembling Fire Pump Package based on NFPA 20 which the bare shaft pumps are taken from KSB Global factories and partners (listed and non listed).

Offering comprehensive product range with competitive price, KSB Indonesia has collaborated with NM Fire that provides listed fire pumps with a wide product range.

KSB Indonesia's testing facility is established to meet the international standard for pump performance tests in accordance with ISO 9906:2011, Hydraulic Institute, and API 610:2010, and commence wide range of testing.



Technical data:

- capacity: up to 5.000 USGPM
- power: max 315 kW (electrical motor)

Design pump type:

- horizontal
- vertical
- submersible / deep well pumps

Accessories:

- flow meter
- automatic pressure transmitter
- pressure gauge
- portable flow meter

**Head Office,
Factory and Workshop**
Jl. Timor Block D2-1 MM2100 Industrial Town
Cibitung Bekasi 17520, West Java, Indonesia
Telp: +62 21 8998 3570
Fax: +62 21 8998 3571

Sales and Marketing Office
Secure Building, Block B 3rd Floor
Jl. Raya Protokol Halim Perdanakusuma
East Jakarta 13610
Telp: +62 21 8088 6509
Fax: +62 21 8088 6504

Cilegon
Graha Sucofindo, 2nd Floor
Jl. Ahmad Yani No. 106, Cilegon, Banten 42421
Telp: (+62 254) 386 467
Fax: (+62 254) 386 467

Semarang
Jl. Simongan No 185, Ruko Paramount Village
A-23, Kel. Manyaran, Kec. Semarang Barat,
Semarang 50147
Telp: 024 76432868

Surabaya
Ruko Section One Block C – 2,
Jl. Raya Rungkut Industri No. 1
Surabaya 60292
Telp: +62 31 8477 685
Fax: +62 31 8477 686

Medan
Mandiri Building Lt. 6 Unit 610
Jl. Imam Bonjol No. 16D
Medan Sumatera Utara
Telp: +62 811-940-2855

Palembang
Jl. Residen Abdul Rozak
RT. 006 RW. 002 Kel. Kalidoni,
Kec. Kalidoni, Palembang
Telp: +62 711 5625 756

Pekanbaru/Batam
Komp. Perkantoran Grand Sudirman Block D10
Jl. Datuk Setia Maharaja
Pekanbaru Riau, Indonesia
Telp: +62 811-9440-867

Balikpapan
Jl. Mulawarman No. 5
RT 023 Kel. Manggar, Balikpapan Timur 76116
Telp: +62 542 771 719
Fax: +62 542 771 730

Banjarmasin
Jl. A. Yani KM. 17,8 Komplek Pergudangan
Sumber Baru No. B3 RT 27 RW IX, Kec. Gambut,
Kab. Banjar Kalimantan Selatan
Telp: +62 511 4770 235
Fax: +62 511 4770 236

Sangatta
Jalan Poros Kabo No. 03 RT. 13
Kel. Swarga Bara, Kec. Sangatta Utara
Kab. Kutai Timur
Telp: +62 853 45401904, +62 812 51504416

Makassar
5th Floor, Kav. 507, Fajar Graha Pena
Jl. Urip Sumohardjo No. 20,
Makassar, 90234
Telp: +62 411 3662152



KSB Indonesia
Head Office, Cibitung.
Telp: 021 89983570
Sales & Marketing Office, Jakarta.
Telp: 021 80886509
E-mail: ksbsales@ksb.com
ksb.com/en-id